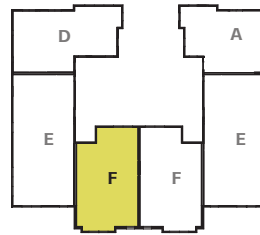


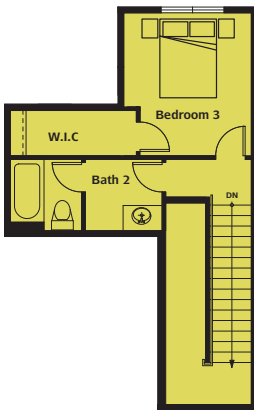


**Foxglove**

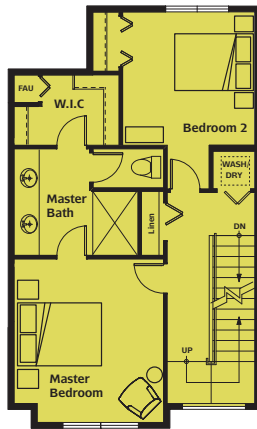
3 Bedroom / 2.5 Bath / 2-Car Garage



**Foxglove (F)**  
 Fourth Floor Plan



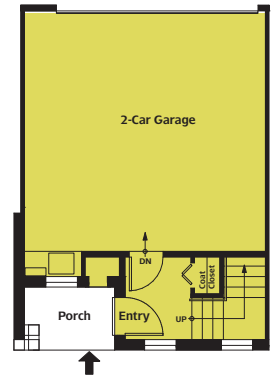
**Foxglove (F)**  
 Third Floor Plan



**Foxglove (F)**  
 Main Floor Plan



**Foxglove (F)**  
 Lower Floor Plan



Located at the end of High St, 3/4 mi West of Highlands Dr in Issaquah Highlands.

Artist's drawings and home plans are shown here for illustrative purposes only. Actual construction of home exteriors and floor plans may vary per homesite. All prospective buyers and selling agents must visit a site sales representative to verify home plans, details and specific homesite information.

