



EASTSIDE EXCELLENCE

Aspen with Basement

4 Bedroom / 3.5 Bath / Bonus Down / 2 Car

The poetic call of rustling Aspen leaves is perhaps one of the most inviting sounds Mother Nature offers up to us as we hike woodland trails or settle down for a picnic in a Northwest Aspen grove. The soft, smooth, pale bark is equally soothing to the eye and mind. The Aspen is not a large tree, although one in Yorkshire, England is recorded at 130 feet in height with a 3½ foot diameter! One of this tree's biggest fans is the beaver which considers the Aspen bark to be a very tasty treat indeed.

Aspen w/Bsmt (1185-4 A)
Shingles with Stone



Aspen w/Bsmt (1185-4 C)
Shingles with Shutters and Arched Entry



Aspen w/Bsmt (1185-4 B)
Shingle Gable with Brick



camwest.com

Artist's drawings and home plans are shown here for illustrative purposes only. Actual construction of home exteriors and floor plans may vary per homesite. All prospective buyers and selling agents must visit a site sales representative to verify home plans, details and specific homesite information.

©2010 CamWest Development LLC



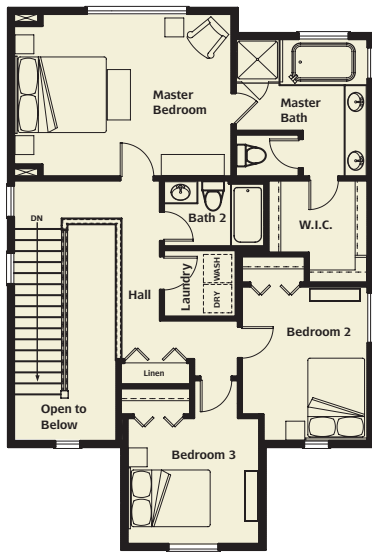


EASTSIDE EXCELLENCE

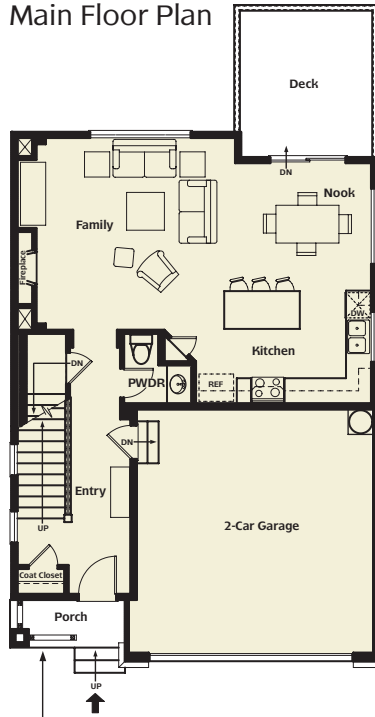
Aspen with Basement

4 Bedroom / 3.5 Bath / Bonus Down / 2 Car

Aspen w/Bsmt (1185-4)
Upper Floor Plan

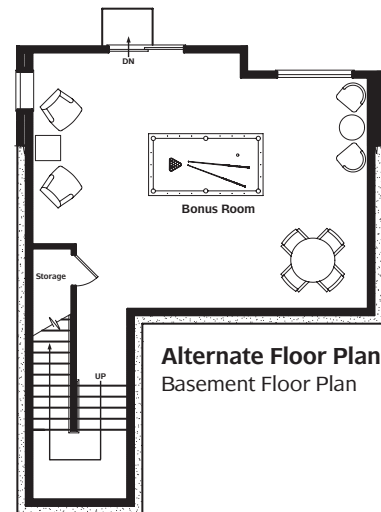
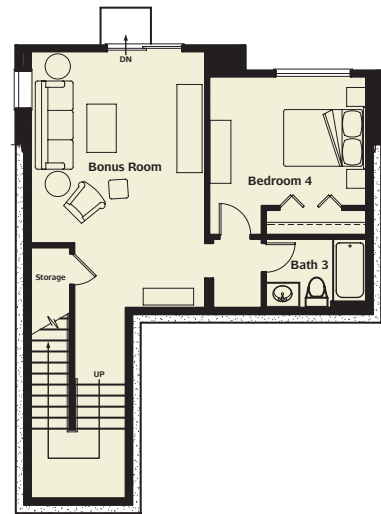


Aspen w/Bsmt (1185-4)
Main Floor Plan



Note: Porch varies per exterior elevation. See site agent for details.

Aspen w/Bsmt (1185-4)
Basement Floor Plan



Alternate Floor Plan
Basement Floor Plan

camwest.com

Artist's drawings and home plans are shown here for illustrative purposes only. Actual construction of home exteriors and floor plans may vary per homesite. All prospective buyers and selling agents must visit a site sales representative to verify home plans, details and specific homesite information.

